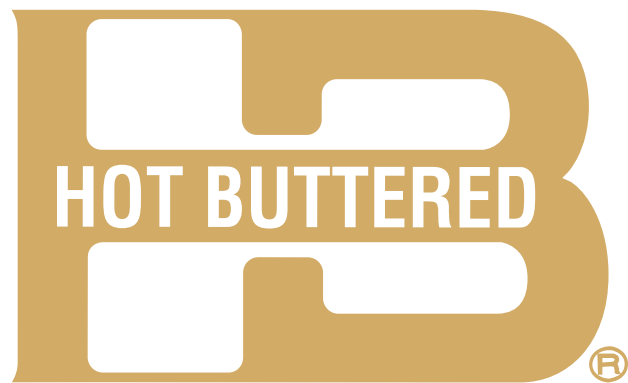




**LIMITED GLOBAL RANGE**  
**1971 - 2011**



## LIMITED GLOBAL RANGE 1971 - 2011

**Hot Buttered's Limited Global Range** is inspired by 40 years of surf culture blended with today's style of surf casual clothing.

Hot Buttered originated during surfing's cottage industry days launching in 1971 by supplying Australian surfers with state of the art surfboard's. Clothing followed as the Hot Buttered faithful searched for surf wear that reflected their individualism. Today's surfer still desires that same independence from mainstream society. The Hot Buttered Limited Global Range is the start of an endeavour to bring surfers back to the individualistic cottage days of the surf industry.

## 1971 KOMBI BOX



Travel, domestic and international, is a prominent feature of Surf Culture. The VW Kombi bus was immensely popular because friends could travel on the cheap. The HB VW Kombi became known as part of Hot Buttered's counter culture signature with it's prominent Hot Buttered Surfboards Rainbow symbol. This true predecessor to the modern-day art car. All HB Global range product will be delivered in a signature Kombi BOX.

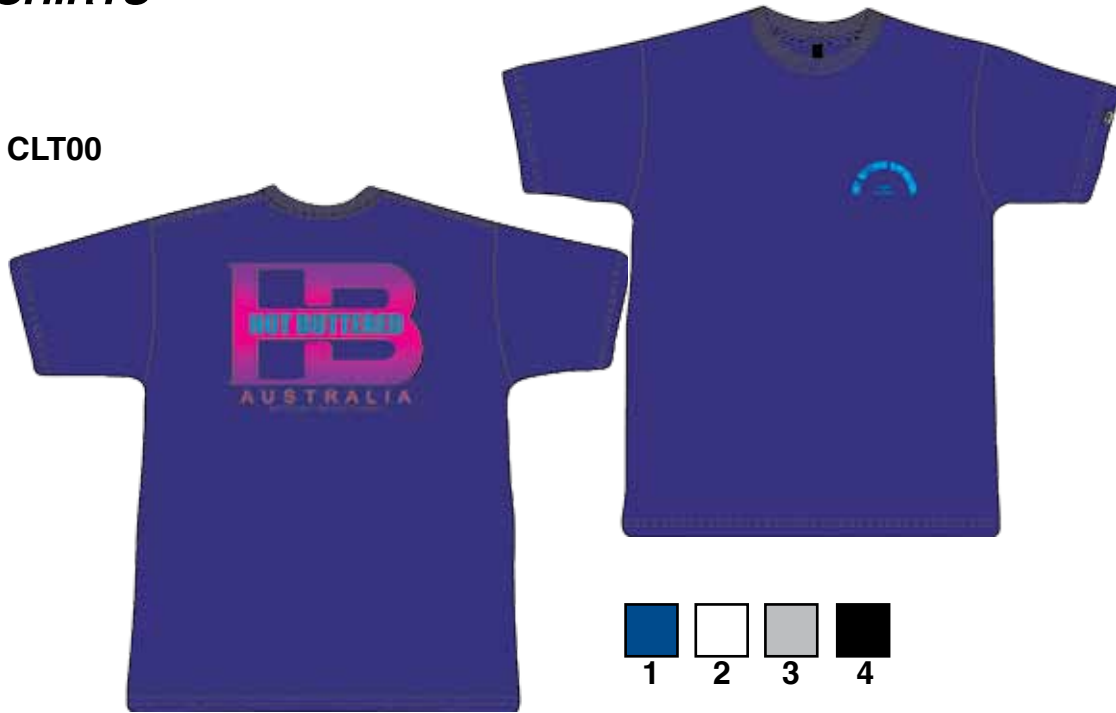
## HISTORY WHEEL



Over the life of HB there have been inspirational moments that were page turning in our growth, development and presentation of cutting edge design. The four History Wheels will show up to 8 images and words explaining the importance of those seminal moments in HB history.

**T-SHIRTS**

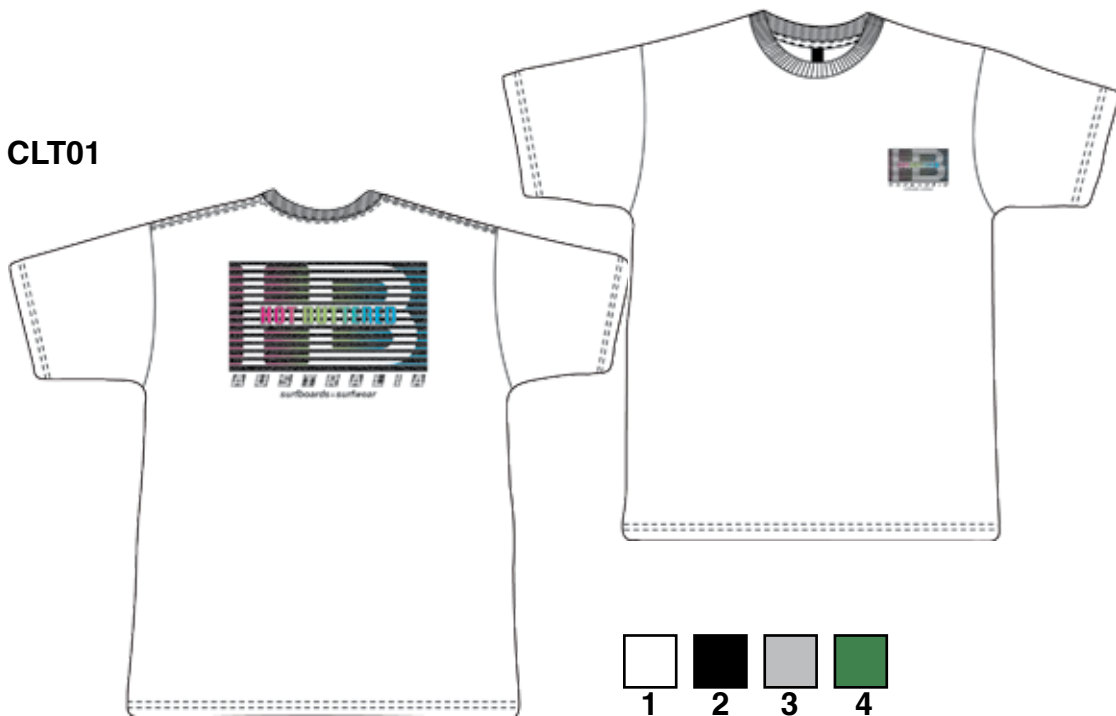
**CLT00**



**100% cotton jersey, 160g**

\*1 - PURPLE, 2 - WHITE, 3 - HEATHER GREY, 4 BLACK

**CLT01**

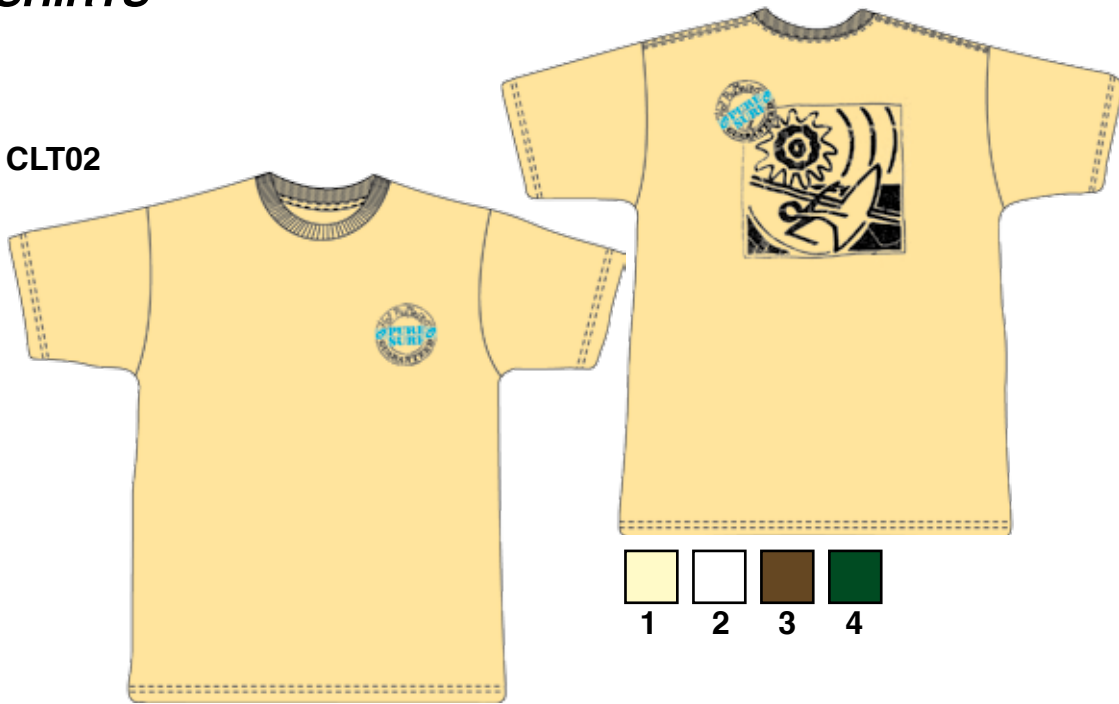


**100% cotton jersey, 160g**

\*1 - WHITE, 2 - BLACK, 3 - HEATHER GREY, 4 - STEEL

## T-SHIRTS

**CLT02**



**Flame knit - 100% Cotton**

FLAME KNIT: \*1 - MELON, 2 - WHITE, 3 - SLATE, 4 - CARBON

**CLT03**

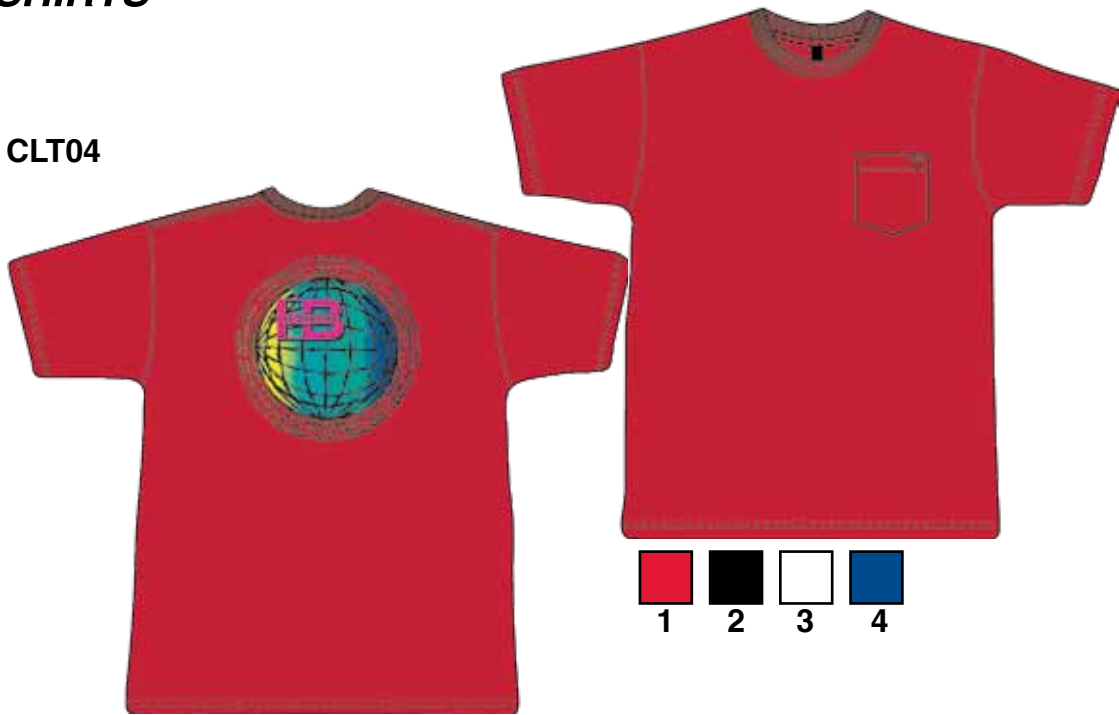


**100% cotton jersey, 160g**

\*1 - STEEL, 2 - BLACK, 3 - OX BLOOD, 4 - MELON

## T-SHIRTS

**CLT04**



**100% cotton jersey, 160g**

\*1 - OX BLOOD, 2 - BLACK, 3 - WHITE, 4 - PURPLE, 5 - OX BLOOD, 6 - HEATHER GREY, 7 - STEEL, 8 - PURPLE

**CLT06**

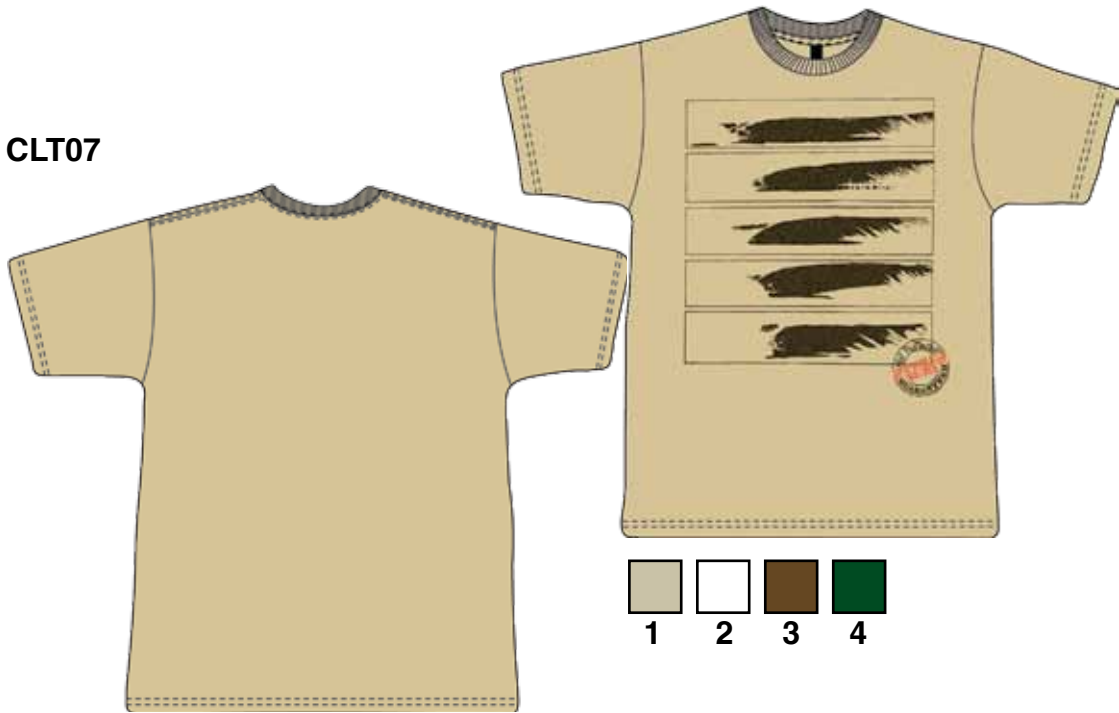


**100% cotton jersey, 160g**

\*1 - BLACK, 2 - WHITE, 3 - SKY, 4 - HEATHER GREY

## T-SHIRTS

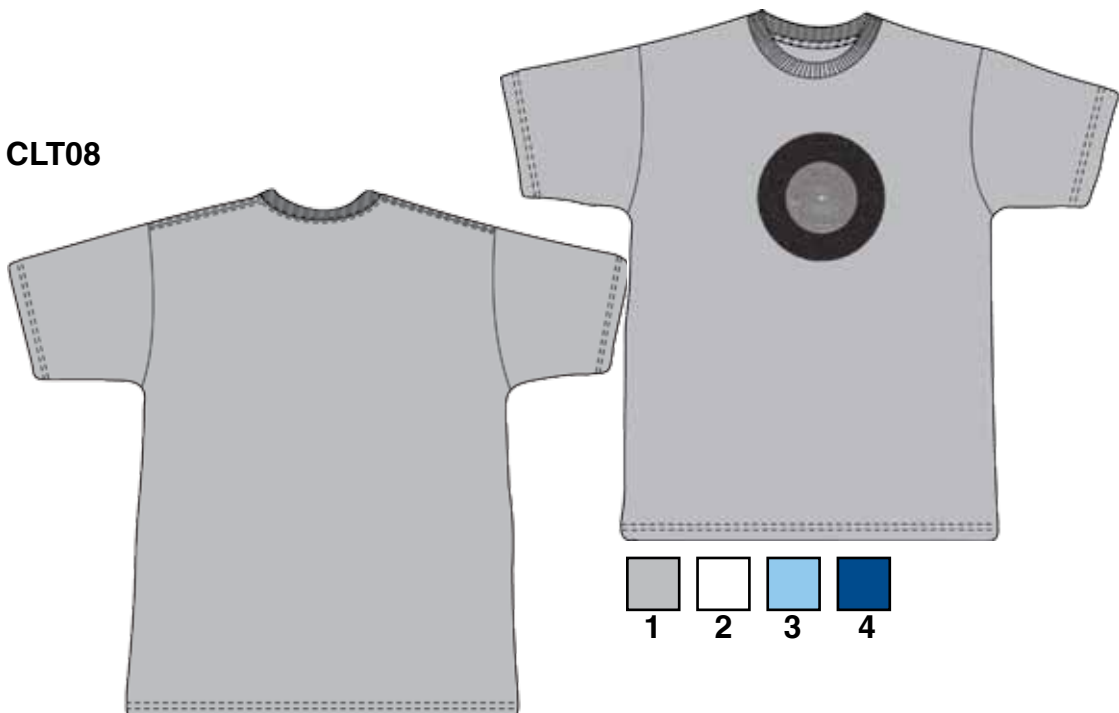
**CLT07**



**Flame 1202 - 100% Cotton**

FLAME KNIT: \*1 - TAUPE, 2 - WHITE, 3 - SLATE, 4 - CARBON

**CLT08**



**100% cotton jersey, 160g**

\*1 - HEATHER GREY, 2 - WHITE, 3 - SKY, 4 - PURPLE

**T-SHIRTS**

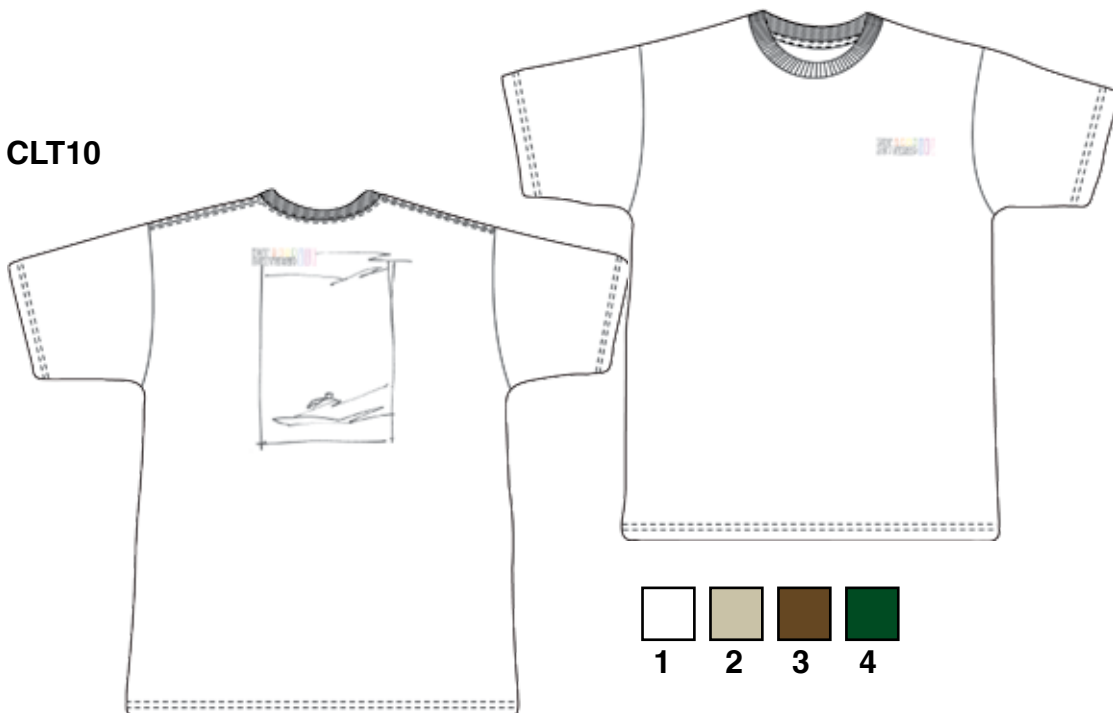
**CLT09**



**100% cotton jersey, 160g**

\*1 - BLACK, 2 - HEATHER GREY

**CLT10**



**Flame 1202 - 100% Cotton**

FLAME KNIT: \*1 - WHITE, 2 - TAUPE, 3 - SLATE, 4 - CARBON

## SPECIAL T-SHIRTS

**SPL00**



**Mesh - 80% Cotton 20% Polyester**

**SPT14**



**100% cotton jersey, 180g**

## SPECIAL T-SHIRTS

SPT17



100% cotton jersey, 180g

## SHIRTS

SSS01



Yarn-dye cotton stripes - 65% Cotton 35% Polyester

## SHIRTS

SSS00



Yarn-dye cotton checks - 100% Cotton

## BOARDSHORTS

BS00



Heavy cotton herrinbone elastane, 250g - 95%cotton 5% elastane

\*1 - BLACK, 2 - BROWN

## BOARDSHORTS

BS01



Heavy cotton twill elastane, 360g - 95% cotton 5% elastane

\*1 - BURNED RED, 2 - BROWN, 3 - DARK BROWN

BS03



Spandex Polyester - 97% cotton 3% elastane

## BOARDSHORTS

**BS05**



**2-Way Spandex - 97% cotton 3% elastane**

\*1 - BROWN, 2 - WHITE, 3 - BLACK

**BS06**



**100% Polyester**

## BOARDSHORTS

BS07



100% Polyester

## WALKSHORTS

WS00



Denim 100 oz - 100% Cotton

\*1 - BLUE

## WALKSHORTS

WS01



Wale-stripe, cotton fabric, 250g - 100% Cotton

\*1 - KAKHI, 2 - BLACK, 3 - TAUPE

WS02

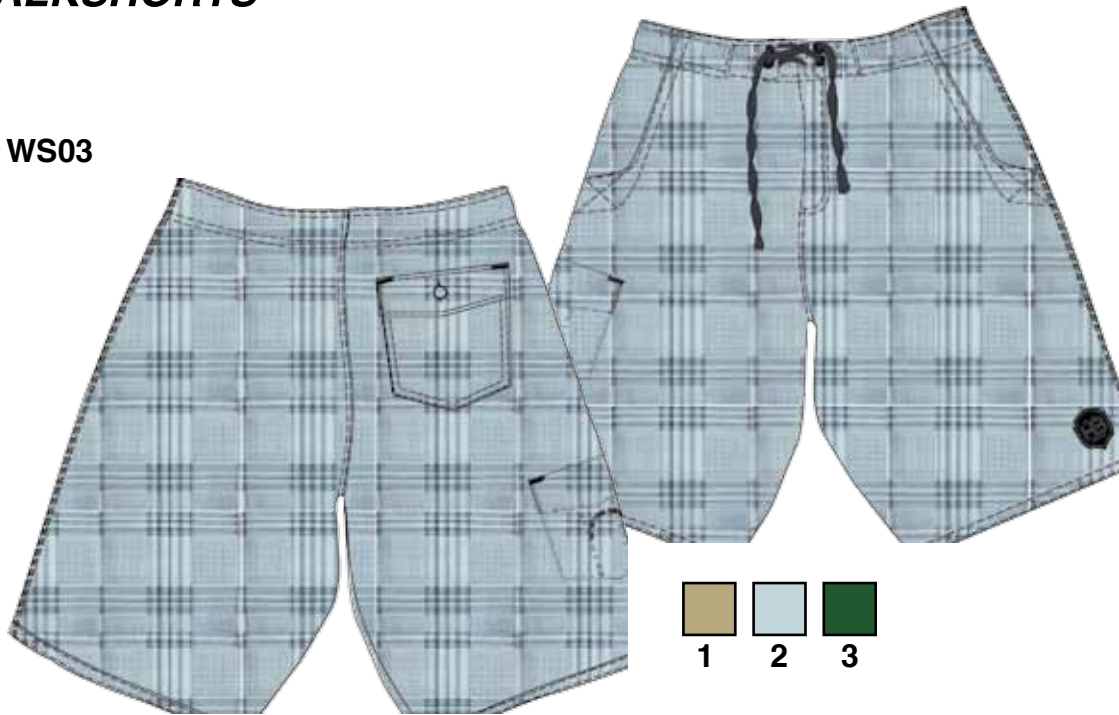


Denim 140 oz - 100% Cotton

\*1 - Dark Blue

## WALKSHORTS

**WS03**



**Cotton printed checks - 100% Cotton**

\*1 - TAUPE, 2 - GREY, 3 - OLIVE

**WS04**



**Cotton twill - 100% Cotton**

\*1 - NAVY, 2 - KAKHI, 3 - GREEN

F.